



GMT Constitutional Area 5 - K, Group L

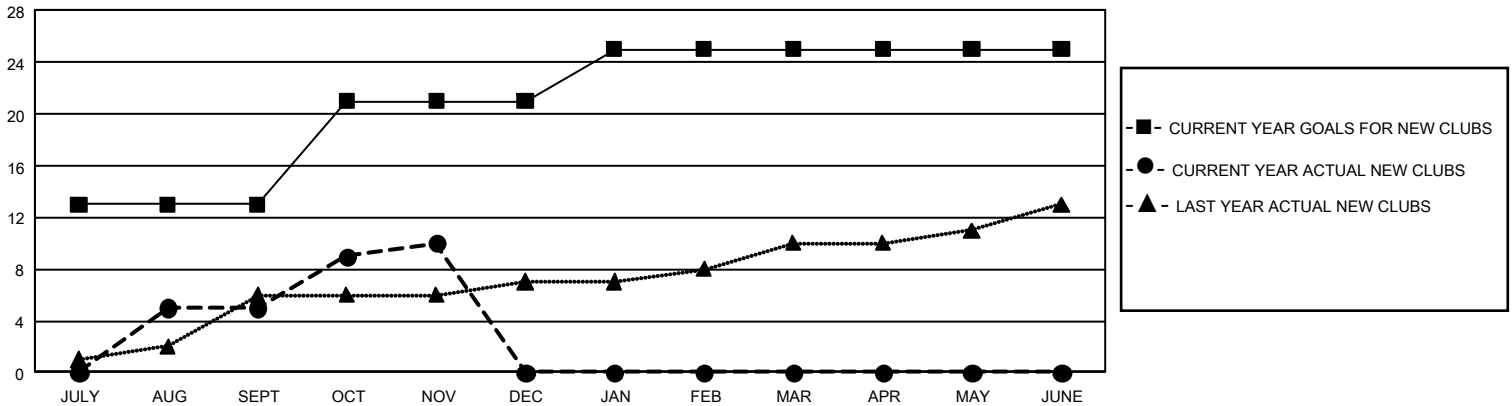
GMT: OPEN

REPORT DOES NOT INCLUDE CLUBS IN UNDISTRICTED AREAS.

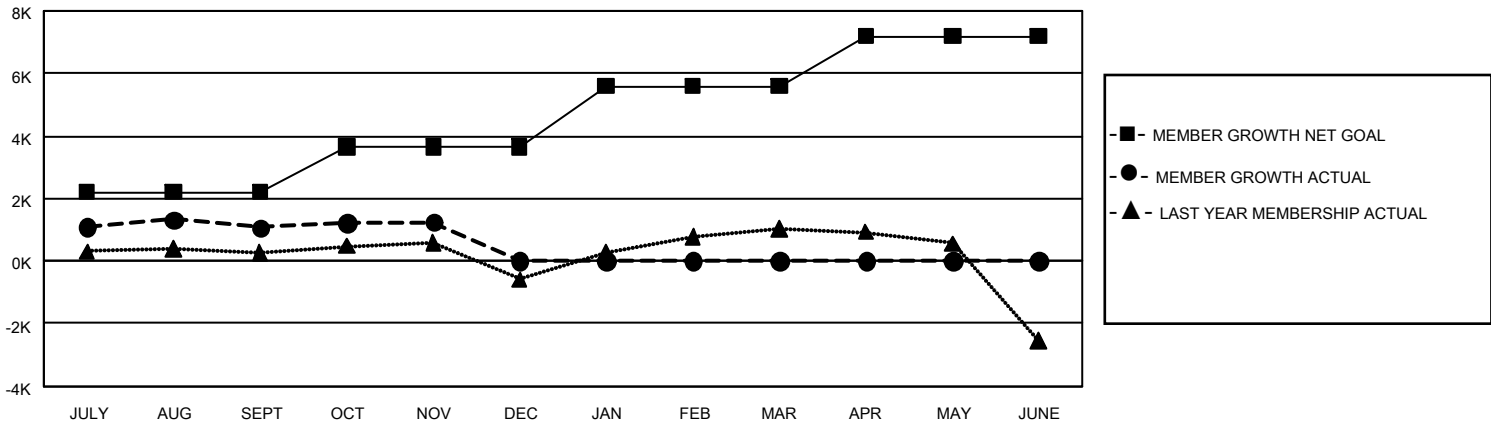
Clubs			
RESULTS FOR 2019-2020			
QUARTER	NEW CLUB GOAL	NEW CLUBS	DROPPED CLUBS
JULY/AUG/SEPT	39	5	3
OCT/NOV/DEC	24	5	0
JAN/FEB/MAR	12	0	0
APR/MAY/JUNE	0	0	0

Members			
RESULTS FOR 2019-2020			
QUARTER	MEMBER GROWTH NET GOAL	MEMBER GROWTH ACTUAL	DROPPED MEMBERS ACTUAL (including transfers)
JULY/AUG/SEPT	6,630	2,781	1,620
OCT/NOV/DEC	4,350	1,069	868
JAN/FEB/MAR	5,820	0	0
APR/MAY/JUNE	4,770	0	0

GOALS AND ACTUAL NEW CLUBS CUMULATIVE



GOALS AND ACTUAL MEMBERS CUMULATIVE



DROPPED CLUBS: 3	732 CLUBS OF 1,062 ADDED 1 OR MORE NEW MEMBERS	<u>GENDER DISTRIBUTION</u>	
<u>DROPPED MEMBERS</u>		MALE	35,862 (71.62%)
DECEASED	25	FEMALE	14,212 (28.38%)
CLUB CANCELLED	0	TOTAL FAMILY UNIT MEMBERS 5,757	
OTHER	2,463		
TOTAL	2,488		
CLICK HERE FOR CUMULATIVE MEMBERSHIP DATA		FAMILY MEMBERS PAYING HALF DUES 3,458	